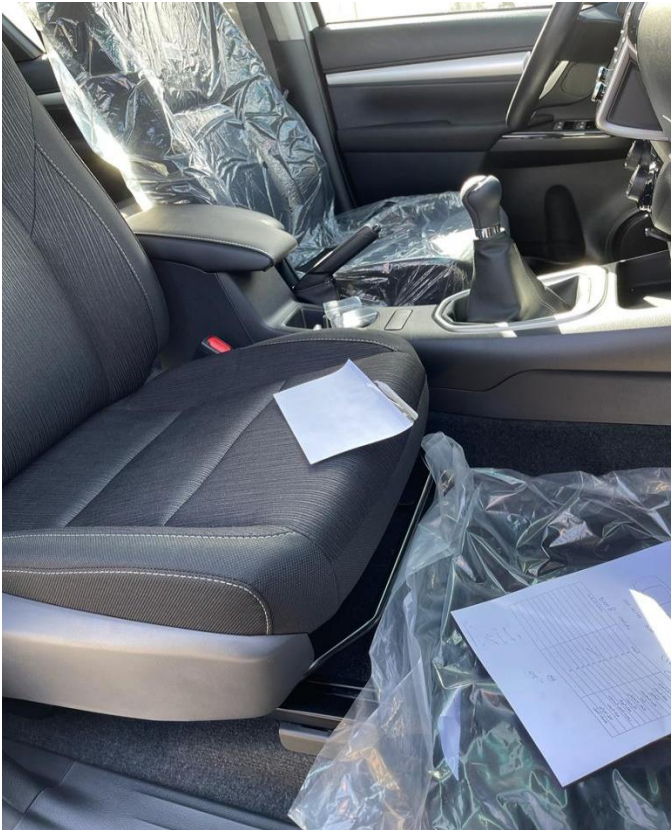


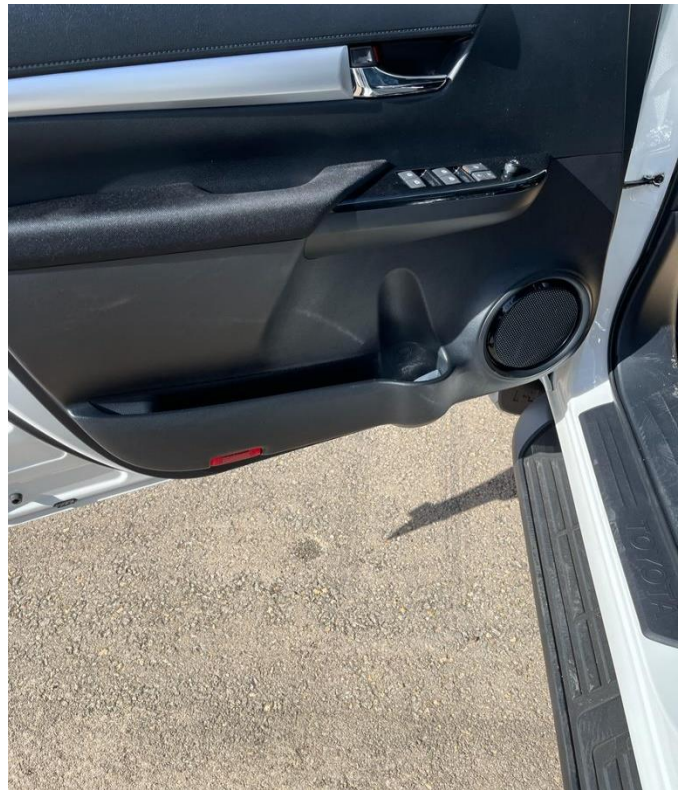
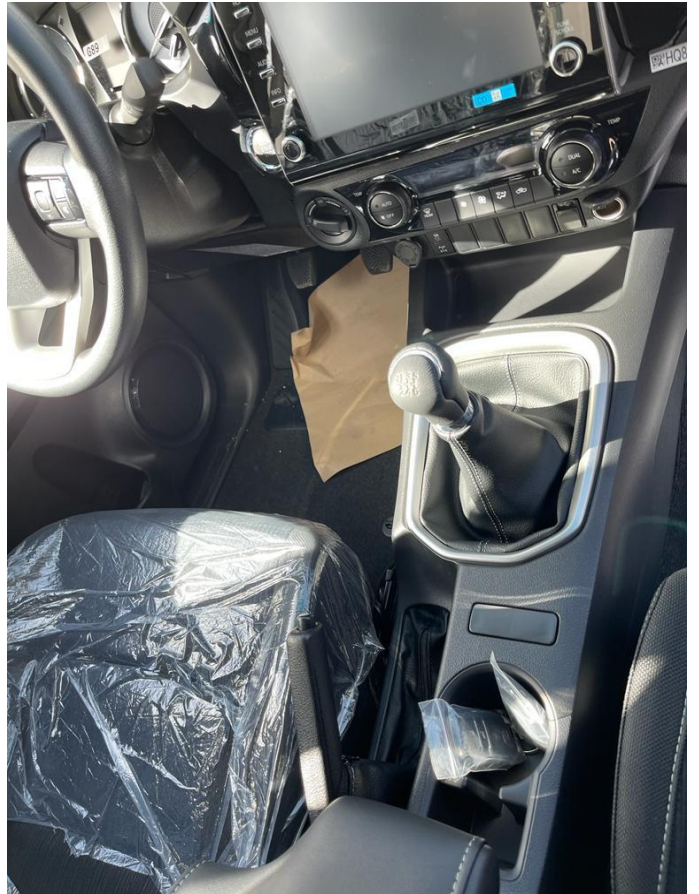
2024 TOYOTA HILUX DOUBLE CAB 4x4 GLX MT











Engine : 2393 cc , (4) Cylinders in-line.

- **Power :** 148 HP
- **Torque :** 400 N.M
- **Transmission :** 6 Speed MT

Exterior Features

- Alloy Wheel 17"
- Headlamp (LED)
- Front Fog Lamp (LED)
- Mud Guard (Front + Rear)
- Chrome Door Outside Handle
- Electric Outside Rear View Mirror (Chrome) + Side Turn Lamp
- Stripe Tape
- High Mount Stop Lamp (LED)
- Rear Fog Lamp
- Headlamp Garnish

Interior / Convenience Features

- Front Air Condition (Auto)
- Seat Material Fabric
- Steering Column (Tilt Mechanical)
- 8" Display Audio (AM/FM CD, Bluetooth) , 4 Speakers
- Steering Switch (Audio)
- Power Window (All Auto)
- Power Door Lock
- Front Cool Box
- Separate Front Seat
- Tire Inflation Pressure Warning

Technology

Coil / Rigid Leaf Suspension

Wireless Door Lock (Smart + Answer Back)

Rear Differential Lock

Power Steering

Back Monitor (Camera)

Rear Sensors

Safety Features

- Anti Locking Brakes (ABS)
- 3 Air Bag System (Driver , Passenger and Knee for D.)
- Anti-Theft System (Immobilizer)
- Vehicle Stability Control (VSC)
- HAC + TSC