

TOYOTA LAND CRUISER 300 VX 3.5 7 SEATER SPECIAL EDITION TURBO PETROL WITH SUNROOF
MODEL 2022

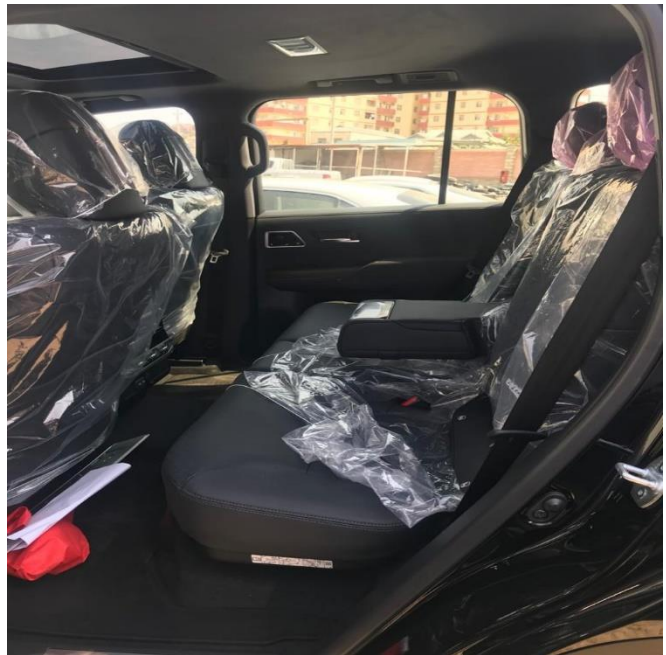


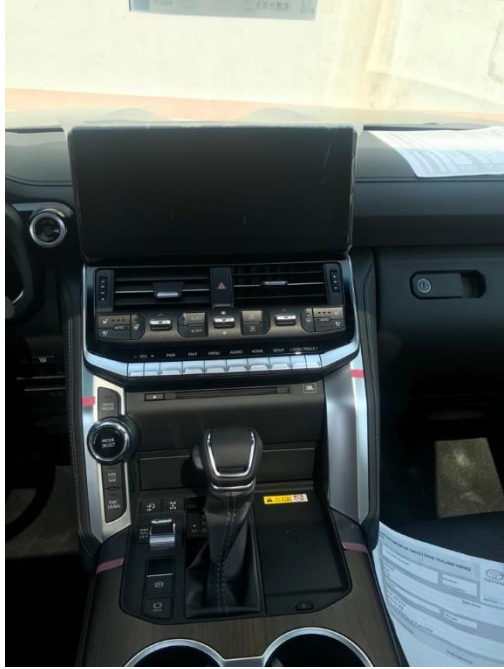












ENGINE TYPE
KATASHIKI
DISPLACEMENT (CC)
NUMBER OF CYLINDERS
FUEL TYPE
TRANSMISSION
BORE & STROKE (MM X MM)
COMPRESSION RATIO
MAX. POWER OUTPUT (KW/RPM)
HP (PS)
MAX. TORQUE (NP/RPM)

V35A-FTS
VJA300L-GNUVZW
3445
6 CYLINDERS, V TYPE
PETROL
10A/T
85.5X100
10.4:1
298 (TENTATIVE)
400
650/1800 (TENTATIVE)

MAX. SPEED (KM/H)
FUEL CONSUMPTION COMBINED
VALVE MECHANISM
VVT-I
EURO EMISSION
COLD AREA PACKAGE
FUEL HEATER

24-VALVE DOHC, CHAIN DRIVE WITH DUAL
EURO 5

SEATING POSSITIONS

FUEL TANK
OWNERS MANUAL
FLOOR MAT
SAFETY KIT
TYRE REPAIR KIT
TRUNK LINER
SKID PLATE
WHEEL ARCH PROTECTOR

7 SEATER
GASOLINE + W/ SUB TANK
WITH
WITH
WITH
WITH
WITHOUT
WITH

DIMENSIONS

LENGTH
WIDTH
HEIGHT
WHEELBASE

4950
1980
1900
2850

TIRES & OFFROAD

TRANSFER & CENTER DIFFERENTIAL
SUSPENSION
AVS (TEMS)
FRONT WHEEL BRAKE
REAR WHEEL BRAKE
PARKING BRAKE
BRAKE M/CYLIND & BOOSTER
TIRE & DISC WHEEL
WHEEL CAP
SPARE WHEEL CARRIER

FULL TIME (TORSSEN) WITHOUT SENSOR
FR=IFS RR=4LINK
WITHOUT
18 INCH DISC
17 INCH DISC
EPB (MOC W/BRAKE HOLD)
AHB-R
265/55R20(8J AL)
ALUMI WHEEL
UNDER

ILLUMINATION & LIGHTS

ROOM LAMP
GLOVE BOX LAMP
DOOR COURTESY LAMP
FRONT PERSONAL LAMP
REAR PERSONAL LAMP
LUGGAGE ROOM LAMP
ILLUMINATED ENTRY SYSTEM
FR FOOT)
HEADLAMPS
SEQUENTIAL TURN + AHB
HEADLAMP LEVELLING
HEADLAMP CLEANER
CLEARANCE LAMP
CORNERING LAMP
FRONT FOG LAMPS
DAYTIME RUNNING LIGHT SYSTEM

FR:LED, RR1&RR2:LED
WITH
WITH LED(FR+RR)
WITH (LED)
LED
LED
WITH (IG SW LIGNT+R/LAMP)+LOUNGE (I/H.
LO : W-PES-BI-LED/HI : REF-LED TURN:LED +
DYNAMIC AUTO+AHB/AHS
WITH + W/FIRST TIME LINK
LED (WITH DRL)+WELCOME
WITH
LED
LED TYPE (WITHOUT OFF SWITCH)

REAR COMBINATION LAMP
REAR FOG LAMP

LED
WITH (IN REAR LAMP)

EXTERIOR

STEP & STEP COVER
WINDSHIELD GLASS
FRONT SIDE GLASS
REAR SIDE GLASS
REAR QUARTER GLASS
BACK GLASS
REAR WINDOW DEFOGGER
FLOOR SILENCER
HOOD SILENCER
DASH SILENCER
BUMPER
REAR BUMPER
RADIATOR GRILLE
BUMPER & GRILLE PROTECTION
REAR SPOILER
FRONT & REAR MUD GUARD
DOOR WINDOW FRAME MOULDING
DOOR BELT MOULDING
WHEEL ARCH MOULDING
ROCKER & DOOR LOWER MOULDING
LOWER BACK AND BACK DOOR GARNISH
ROOF RACK
DOOR OUTSIDE HANDLE
REAR WINDOW WIPER
WIPER BLADE
WINDSHIELD WASHER
WASHER TANK
OUTSIDE REAR VIEW MIRROR
+ LIGHT + BSM COLOR
REGISTER

FULL COVER + ILLUMINATION
GREEN W/TOP BAND + LAMINATED
ACOUSTIC GREEN
GREEN TEMPERED
TEMPERED GREEN
TEMPERED GREEN
WITH
W/RR HEATER DUCT
WITH(HI)
HIGH
COLOR
COLOR
SILVER PT+RUSSIA PLTG (VXWXZX)
WITHOUT
WITH
WITH(FR:F/C STEP RR:STD)
SUS
SUS
STD(COLOR)
INTEGRATED W/STEP
WITH (COLOR)
ROOF RAIL
COLOURED
WITH (INT+WASHER CONTROL)
STD TYPE
COLD AREA+WASHER NOZZLE HEATER
FR+RR+CL
RM RE ECM HEATER REV COLOR + CAMERA

VX,WX,ZX

INTERIOR

SHIFT LEVER & KNOB
STEERING WHEEL
STEERING
BRAKE PEDAL TYPE
DOOR INSIDE HANDLE
POWER WINDOWS
SW PLATING
INSIDE REAR VIEW MIRROR
ROOF HEAD LINING
SUN VISOR
DOOR TRIM
DOOR SCUFF PLATE
FRONT PILLAR GARNISH
CENTER PILLAR GARNISH
PACKAGE TRAY TRIM & TONNEAU COVER
SPEAKER GRILLE
FRONT FLOOR CARPET AND MAT
CUP HOLDER
INSTRUMENT PANEL

LEATHER SEQUENTIAL(M-MODE)
LEATHER+HTR+VIB
HPS+VSC+STEER ACT
PENDANT TYPE
PLATING
ALL DOOR 1TOUCH U/D+JAMPR + REMOTE +

AUTOMATIC D&N
FABRIC
MIRROR+LED LIGHT+SLIDE
MID(WATER TRANSFER)
FR + RR (SUS)
FABRIC
FABRIC
WITHOUT
PREMIUM
NEEDLE PUNCH
FR(2)+2ND(2)+3RD(4)
FOR HI GRADE

I/P CENTER CLUSTER
GLOVE BOX
CONSOLE BOX
REAR CONSOLE BOX
OVERHEAD CONSOLE
KNEE PANEL
STEERING WHEEL SWITCHES
SPEEDOMETER

SEATS

FRONT SEAT
(W/CALL)
SEAT REAR NO 1
SEAT REAR NO 2
RECLINE/FOLD
SEAT MATERIAL
FRONT HEADRESTS
REAR HEADRESTS
REAR ARM REST
FRONT SEAT VERTICAL ADJUSTER
FRONT SEAT LUMBAR SUPPORT
EASY ACCESS SYSTEM FOR DRIVER
SEAT HEATER
SEAT BACK POCKET
SEAT AIRCONDITIONER
FRONT SEAT BELT
REAR NO 2 SEAT BELT

CONVENIENCE

INTEGRATED SPORT DRIVING
CRUISE CONTROL
DIFFERENTIAL LOCK
STEERING COLUMN
VSC
HILL ASSIST CONTROL (HAC)
VEHICLE DYNAMIC MANAGEMENT
LUGGAGE & BACK DOOR
SUN ROOF & MOON ROOF
AUTO & EASY CLOSER DOOR
WINDSHIELD WIPER CONTROL
STARTING SYSTEM
TRAILER WIRING HARNESS
HEAD UP DISPLAY
WIRELESS SETTING DEVICE
WIRELESS CHARGER
EMV AND NAVIGATION SYSTEM
PARKING SUPPORT ALT/BRAKE
BACK MONITOR

SAFETY

ANTI-THEFT LABEL
SAFETY SENSE
ANTI-THEFT SYSTEM
FINGER PRINT
DOOR LOCK

PLATING
LID SYNTHETIC LEATHER
MID (WATER TRANSFER)
SHINTHETIC LEATHER
WITH MOON ROOF + INTRUDER SENSOR
(D+P)-A/B
AD+MID+TEL+VO+ACC+LDA PLT
OPTI 7IN TFT MID 260KM/H

P-SEPARATE + D:MEMORY 3POS ASA

BACK4:2:4
5:5 FOR 2 RECLINE/FOLD+POWER

LEATHER (SMOOTH)
FIXED
RR N1*3+RR N2*2
WITH (RR N0.1)
D&P: POWER
D: POWER
WITH(TILT+SEAT SLIDE)TSM
FR+RR NO1
WITH (FR SEAT BACK)
D+P VENTILATION TYPE + RR VENTILATION
ELR3-3(PRETEEN+1 F/L+T/RE
ELR 3-3

3 MODE
FULL SPEED RANGE ACC
FR: LOCK DIFF & RR LOCK DIFF
E-TILT+TLSCO W/PROTECTOR
D+ACC
WITH
VDIM
HATCH PBD W/PRE LOCK SW
WITH (W/JAM PRO) +REMOTE
BACK DOOR
INT+WASHER+RAIN SSR
PUSH
WITH (NORMAL)
WITHOUT
BLUETOOTH+WIFI
FR ONLY
EMV (W/O NAVI)
PKSB (O+V+P /FR4RR4)
PVM+MTM (4-CAMERA)

WITH
TSS 2/ LSS +2
IMOB + SIREN + INTRUDE & SLANT +

D&P ONE MOTION

POWER DOOR LOCK
WIRELESS DOOR LOCK
SRS AIRBAG
SIDEA/B:FR + SIDEA/B (RR1)
SEAT BELT WARNING
WASHER FLUID LEVEL WARNING
TYRE INFLATION PRESSURE WARNING
HORN
LANE KEEP ASSIST (LKA)
LANE CHANGE ASSIST

VENTILATION

HEATER
HEATER REAR DUCT
HEATER CONTROL PANEL
REAR HEATER CONTROL PANEL
A/C
CONDENSER FAN
COOLER REAR DUCT
MINUS ION GENERATOR
COOL & HOT BOX

AUDIO

ACCESSORY CONNECTOR (N0 1)
ACCESSORY CONNECTOR (N0 2)
AUDIO (OVERSEAS MARKET)
ANTENNA
ROOF (GPS)
MIKE & MIKE AMP

WITH+SPEED-LOCK+C-U/L + W LOCK
WITH ALL DOOR+PBD
D: SINGLE + P:DUAL + CSA:FR+RR12,

D+P (LAMP+BUZZER)
WITH
WITH(434MHZ ECE)
FLAT TYPE WITH E-MARK
LTA+VIB
BSM (LONG)

4ALL (2LAYER) + PTC (2LAYER)
RR N.1+RR N.2+DEF
AUT(4ZONE)+EMV(TMOT) PLTG
WITH (4ZONE) W/PLATING
AUTO4-SEAT IND CTRL
W/O
WITH + ROOF(RR NO.1+RR NO.2)
NANOE
COOL BOX

FR:DC12+RR:DC12+DK:AC220
USB FR : 1RR1 : 2*1RR2 : 1+1
EMV+DVD 12.3IN JBL14SP
GLASS ANTENNA (AM/FM+FMSUB) + DAB +

WITH