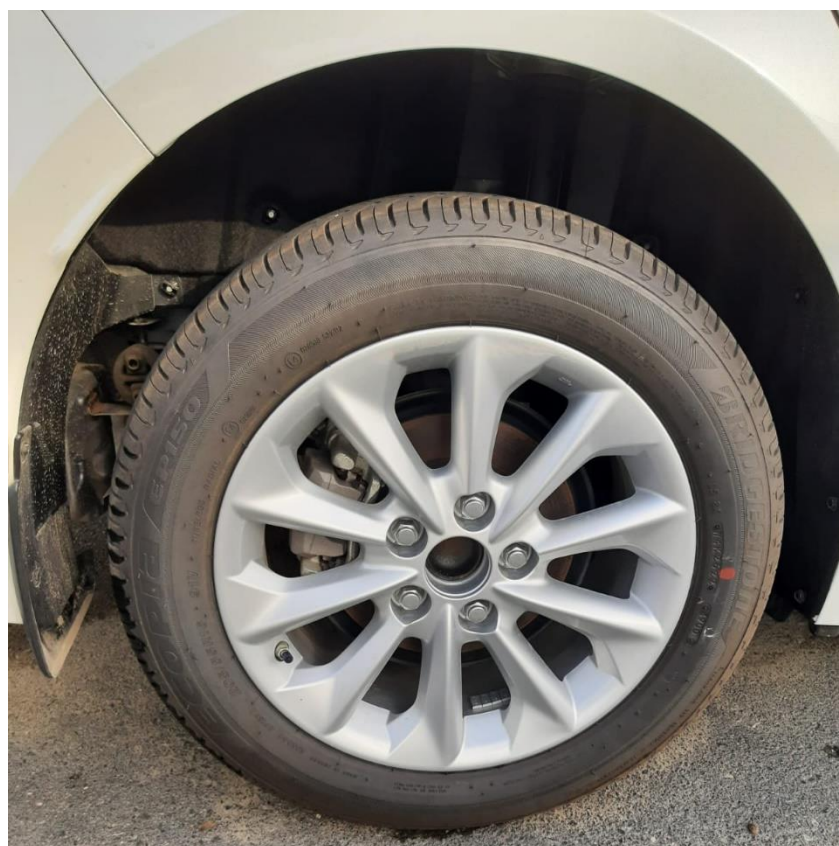
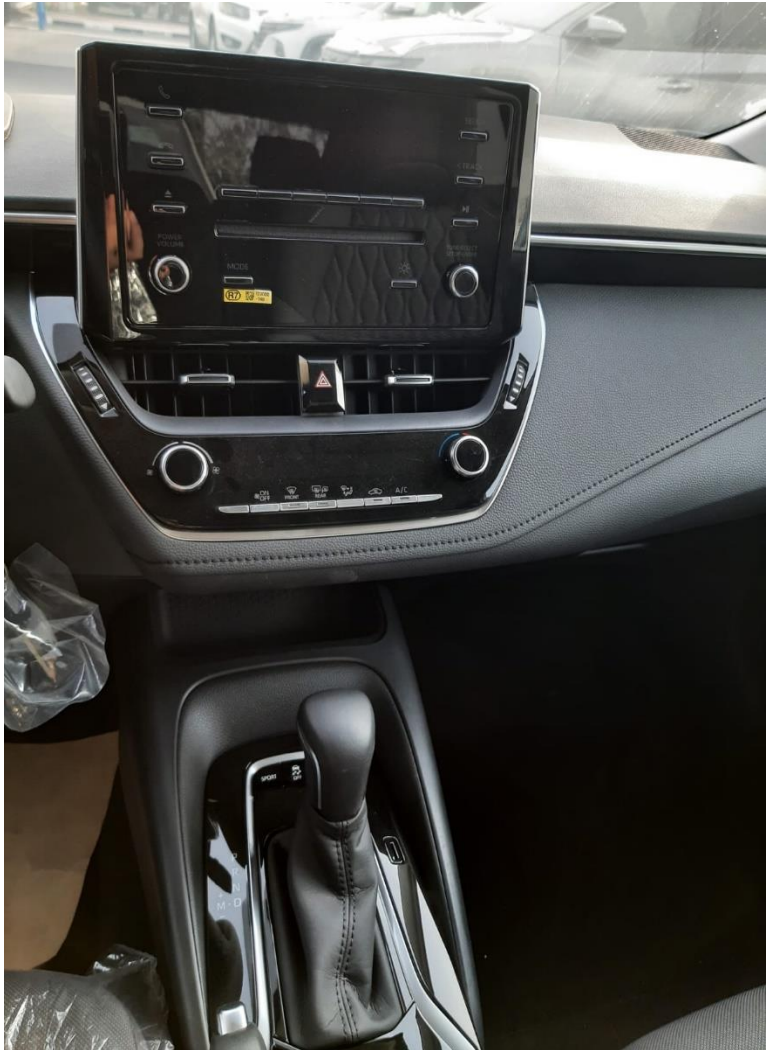
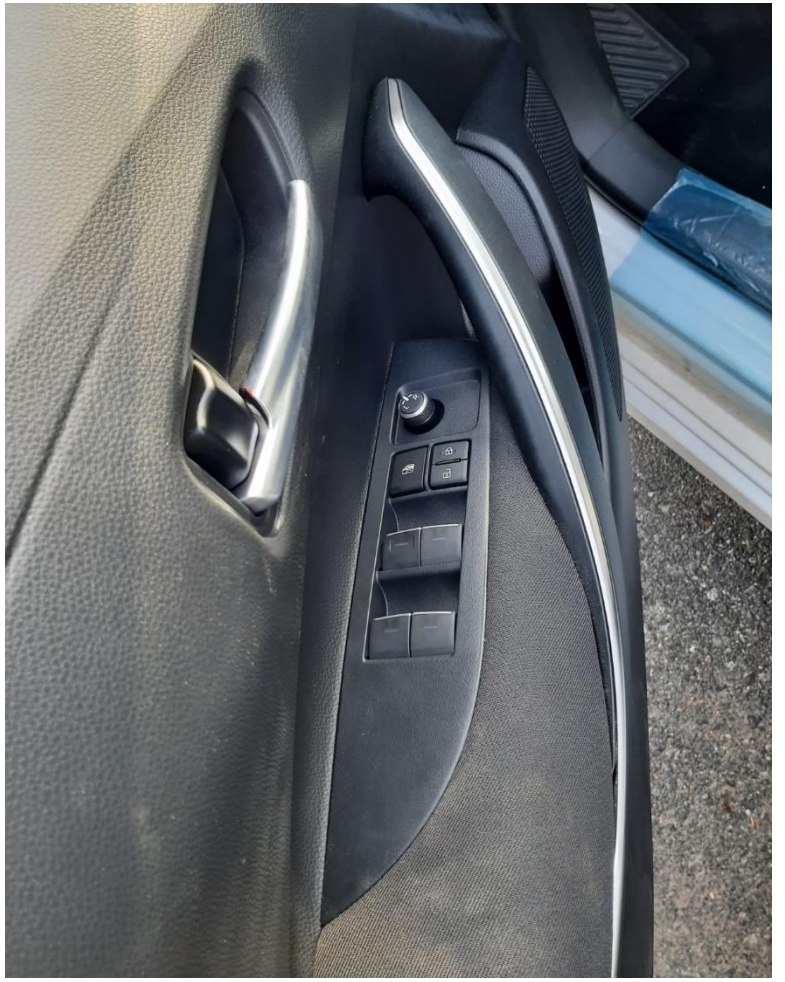


2023 TOYOTA COROLLA MID OPTION 1.6LTR – ALLOY WHEEL









SPARE TIRE	GROUND
TIRE BRAND	BRIDGESTONE
BATTERY	LN1 36AH
DOOR WINDOW FRAME MOULDING	PLATING + RESIN
POWER WINDOW	FR&RR4 ONETOUCH UP/DOWN HI
TIRE AND DISC WHEEL	205/55R16 AL1 ROUGH
CRUISE CONTROL	WITHOUT
EXHAUST EMISSION CONTROL	EURO4 W/O OBD
TOOL(FACTORY INSTALLATION)	JACK HANDLE+HUB NUT WRENCH+DRIVER+SPANNER+PLIERS
REAR CONSOLE BOX	FABRIC W/O ST W/O SLIDE PIANO BLACK
STEERING WHEEL	3-SPOKE, LEATHER
NCAP	WITHOUT
WINDSHIELD DEICER	WITHOUT
ACCESSORY CONNECTOR 2	WITHOUT
ADDITIONAL HEATER	WITHOUT
KEY PLATE	JACKKNIFE MASTER(W/TR)2,MASTER1
WIND SHIELD WIPER CONTROL	INTERMITTENT(TIME ADJUSTMENT)
CUP HOLDER	FRONT:2+REAR:2
HEADLAMP	BI PES HALOGEN
OUTSIDE REAR VIEW MIRROR	ELECTRIC,HEATER
WIRELESS/SMART DOOR LOCK	WITH
DOOR OUTSIDE HANDLE	BODYCOLOR D:W/KEY,P:W/O
LUGGAGE AND BACK DOOR OPENER	CABLE + ELECTORIC LOCK
STARTER HOLDING CONTROL	WITHOUT
SUN VISOR	PVC (D + P), W/MIRROR
CLEARANCE AND BACK SONAR	FRONT&REAR SONAR
COOLER REAR DUCT	WITHOUT
REGISTER	FRONT:SATIN REAR:W/O
REAR FOG LAMP	WITH
BACK MONITOR	WITHOUT
SEAT LUMBER SUPPORT	WITHOUT
LANE KEEPING ASSIST SYSTEM	WITHOUT
AIR CONDITIONER	E-MANUAL A/C
HEATER CONTROL PANEL	MANUAL + SATIN
SEAT MATERIAL	FABRIC B (MID)
DOOR TRIM	FRONT&REAR: HARD W/NV FELT
DOOR ARM REST	FABRIC
DOOR INNER GARNISH	PLATING+RESIN
FRONT CONSOLE BOX	RESIN
SEAT HEATER	WITHOUT
INSIDE REAR VIEW MIRROR	DAY&NIGHT
MUD GUARDS	FR + RR
WASHER FLUID	ETHANOL FULL FILL
STEERING SWITCH	DISP(H)+T+V+A
COLD AREA PACKAGE	WITHOUT
WASHER TANK	2.5L
REAR HEATER DUCT	WITHOUT
STARTER	1.0KW
EMISSION ID PLATE	DESTINATION EXCEPT JAPAN
EXPORT/DOMESTIC	EXPORT
DEST. PACKAGE (FOR EUROPE)	WITHOUT
ANTI-THEFT SYSTEM	IMMOBILIZER
SUN ROOF AND MOON ROOF	WITHOUT
ROOF HEAD LINING	W/NV FELT LO
WASHER FLUID LEVEL WARNING	WITHOUT
AIR BAG SYSTEM	D+P(S)
ASSIST GRIP	FRONT:1, REAR:2
WIRELESS CHARGER	WITHOUT

FRONT FOG AND DRIVING LAMP	WITH(LED+MAT BLACK+SILVER)
PRODUCTION SEGMENT	SEG C
REAR WINDOW DEFOGGER	STD TYPE W/TIMER
SEVERE USAGE PACKAGE	SPEC.1(20MM UP)
MODEL YEAR	WITHOUT
OWNERS MANUAL	ARABIC/ENGLISH(BOTH)
SPEED WARNING	WITHOUT
REGULATION COMPLIANCE LABEL	GENERAL LABEL
DEST. PACKAGE (EXCEPT EUROPE)	EGYPT
INSTRUMENT PANEL UNDER COVER	WITH(D ONLY)
SEAT BELT WARNING	WITH FRONT+REAR(BUZZER + LAMP)
TIRE INFLATION PRESS. WARNING	WITH(433MHZ)DIRECT
PRODUCTION SEGMENT	SEG B
HEADLAMP CLEANER	WITHOUT
LUGGAGE ROOM AND DECK TRIM	SIDE(W/O FELT)+REAR+1CON FK
PACKAGE OPTION 5	WITHOUT
INSTRUMENT PANEL	SOFT W/STITCH(P-PAD)
WHEEL CAP	CENTER ORNAMENT (FOR ALUMI)
LANE CHANGE ASSIST	WITHOUT
DISPLACEMENT MARK	1.6
PACKAGE OPTION 4	WITHOUT
FRONT BUMPER	PP COLOR
FRONT GRILLE	BLACK PAINT+PLATING
RADIATOR LOWER GRILLE	MATERIAL BLACK
REAR SPOILER	WITHOUT
ROCKER AND DOOR LOWER MOULDING	WITHOUT
LWR BACK AND BACK DOOR GARNISH	WITH(PLATING)
MODEL NAME MARK	COROLLA(RR1)
BRAND SYMBOL MARK	TOYOTA SYMBOL(FR1,RR1)
DOOR SCUFF PLATE	WITH
SHIFT LEVER BOOT	W/SATIN PLTNG+PIANO BLACK BEZEL
FRONT SEAT	NORMAL
FRONT SEAT VERTICAL ADJUSTER	D:2WAY MANUAL
SEAT BACK POCKET	WITH(P ONLY)
REAR GLASS	PRIVACY 20%
REAR SIDE GLASS	PRIVACY 20%
HIGH MOUNT STOP LAMP	LED TYPE(CABIN) +PRIVACY GLASS
SAFTY SENSE	WITHOUT
DATA COMMUNICATION MODULE	WITHOUT
FRONT UNDER PROTECTOR	TANK SIDE + REAR
AUDIO(OVERSEAS MARKET)	CD/BT/USB 6SP
CLOCK	AUDIO+METER
MIKE AND MIKE AMPLIFIER	WITH(OHC)
AUDIO JACK	USB
DOOR TRIM ORNAMENT	RESIN+SATIN PLATING
REMOTE SERVICE PACKAGE	WITHOUT
BLACK OUT	RADIATOR SP + ID PLATE + SASH
OCCUPANT CLASSIFICATION SENSOR	P:SEAT SENSOR
GRADE MARK (EXPORT)	WITHOUT
FLOOR MAT	RUBBER FM
FUEL CAUTION LABEL	ENGLISH
PACKAGE OPTION 6	WITHOUT
BRAKE M/CYLINDER AND BOOSTER	10 BOOSTER(ADVICS)
FRONT WHEEL BRAKE	15 INCHES DISC (A)
REAR WHEEL BRAKE	15 INCHES DISC BUILT IN (A)
MULTI INFORMATION DISPLAY	4.2INCH
SPEEDOMETER	KM/H + SATIN
STARTING SYSTEM	ROTARY(MECHANICAL)

E/G UNDER COVER AND PROTECTOR	WITH STEEL FULL
ILLUMINATED ENTRY SYSTEM	WITH(ROOM & MAP LAMP)
REAR COMBINATION LAMP	LED(TAIL/STOP)+BULB(TURN)
JACK	WITH
WARNING SIGN FITTINGS	WITHOUT
FIRST-AID KIT PLACE	WITH
AIR-BAG CAUTION LABEL	PICTOGRAM*P2
EXHAUST EMISSION LABEL	WITHOUT
TIRE PRESS CAUTION LABEL	ENGLISH
ANTI-THEFT LABEL	WITHOUT
BATTERY CAUTION LABEL	WITHOUT
FUEL CONSUMPTION PER. LABEL	WITHOUT
REFRIGERANT CORRESPONDENCE	HFC134A
GRADE PACKAGE	WITHOUT
PACKAGE OPTION 3	BASE
LOW FUEL CONSUMPTION PACKAGE	WITHOUT
HOT AREA PACKAGE	B-AREA SPEC
BODY RUST PROTECTION	ANTI CORROSION MEASURES 14-4 OTHERS
ANTI-PROJECTION MEASURES	WITH
DUST PROTECTION	WITHOUT
CHIPPING PROTECTOR (PAINTED)	ROCKER+HOOD
CHIPPING PROTECTOR (TAPE)	WITHOUT
PAINT PROTECTION FILM	WRAP GUARD
TOWING PACKAGE	WITHOUT
WHEEL LOCKS	WITHOUT
ENGINE	1ZR-FE
RADIATOR	600X376X16
ENGINE COOLANT	LLC 50%
ENGINE OIL COOLER	WITHOUT
FAN AND COUPLING	120W(PWM)
RADIATOR SEAL	WITH
CATALYTIC CONVERTER	9R-08+9R-08
FRONT EXHAUST PIPE	SINGLE PIPE
EXHAUST TAIL PIPE & DIFFUSER	SINGLE W/O DIFFUSER
SUB MUFFLER	CONVE WITH(1 PIECE)
INTER COOLER	WITHOUT
VARIABLE VALVE TIMING SYSTEM	WITHOUT
SPARK PLUG	IRIDIUM W/REGISTANCE
ACCELERATOR PEDAL	ELECTRIC
CLUTCH START SYSTEM	WITHOUT
EXHAUST EMISSION SENSOR	A/FX1+O2X1,W/HEATER
FUEL PUMP	STANDARD
FUEL FILTER	REGULAR
FUEL HEATER	WITHOUT
FUEL SEDIMENTER	WITHOUT
FUEL INLET	WITH INTERFERENCE
FUEL TANK CAPACITY	50L RESIN
FUEL CAP HANGER	WITH
EVAPORATIVE SYSTEM	EURO6 W/O FVC
FUEL CUT SYSTEM	WITH(ELECTRIC)
TRANSMISSION	K311 CVT
TRANSMISSION OIL COOLER	WITH (CVT OIL COOLER)
CLUTCH	WITHOUT
CLUTCH PEDAL	WITHOUT
CLUTCH ACCUMULATOR	WITHOUT
SHIFT LEVER AND KNOB	CVT LEATHER
KICK DOWN SWITCH SYSTEM	WITH
A/T SHIFT LOCK SYSTEM	WITH(W/O REVERSE INHIBIT)

SHIFT SWITCH	SEQUENTIAL SHIFT
ECO DRIVE MODE	SPORT MODE
FRONT DIFFERENTIAL	5.698
FRONT DRIVE SHAFT	GI3.26(S)-SX6.1-26
EV MODE	WITHOUT
STEERING COLUMN	TILT&TELESCOPIC
POWER STEERING	EPS (BRUSHLESS)
FRONT SUSPENSION	MACPHERSON STRUT(FF)
REAR SUSPENSION	DOUBLEWISHBONE(FF)
STABILIZER	BOTH FR & RR
PITCH AND BOUNCE CONTROL	WITHOUT
PARKING BRAKE	CENTER LEVER + SATIN KNOB
BRAKE CONTROL VALVE	EBD
BRAKE VACUUM PUMP	WITHOUT
ABS	WITH
VSC	WITH VSC(B)
HILL STARTING ASSIST SYSTEM	WITH(HAC3)
SPARE WHEEL COVER	WITHOUT
FRONT PERFORMANCE ROD	WITHOUT
REAR PERFORMANCE ROD	WITHOUT
WINDSHIELD GLASS	GREEN LAMINATED 70% ACOUSTIC
FRONT SIDE GLASS	GREEN 70%
REAR QUARTER GLASS	WITHOUT
FUEL TANK PROTECTOR	WITH(CONV)
FENDER LINER	FRONT(RESIN)&RR
HOOD SILENCER	WITHOUT
DASH SILENCER	INNER + E/G ROOM
TRANSPORT HOOK	FR1,RR1 HOOK2
ENGINE ROOM COVER	WITHOUT
REAR BUMPER	PP COLOR
RADIATOR COVER	WITH
GRILL SHUTTER	WITHOUT
FRONT SPOILER	WITHOUT
SIDE MUD GUARDS	WITHOUT
AIR SPATS	WITH(FR+RR)
WINDSHIELD MOULDING	WITH(BLACK)
REAR WINDOW MOULDING	WITHOUT
ROOF DRIP MOULDING	WITH
SIDE PROTECTION MOULDING	WITHOUT
DOOR BELT MOULDING	BLACK
BRAND NAME MARK	WITHOUT
MODEL SYMBOL MARK	WITHOUT
TRANSMISSION MARK	WITHOUT
LICENSE PLATE BRACKET	WITHOUT
DOOR LOCK	FRONT 2STEP D 1MOTION
POWER DOOR LOCK	WITH
CHILD PROTECTOR	WITH(REAR DOOR ONLY)
DOOR INSIDE HANDLE	PLATING
REAR DOOR OUTSIDE HANDLE	WITHOUT
REAR DOOR INSIDE HANDLE	WITH
FUEL LID OPENER	CABLE TYPE
WINDSHIELD WIPER	STANDARD TYPE
REAR WINDOW WIPER	WITHOUT
WIPER BLADE	STANDARD(DESIGN TYPE)
WINDSHIELD WASHER	NOZZLE :BLACK, 2PCS
ROOM LAMP	PERSONAL TYPE
GLOVE BOX LAMP	WITH
DOOR COURTESY LAMP	WITHOUT

FRONT PERSONAL LAMP	BULB
LUGGAGE ROOM LAMP	WITH
HEADLAMP AIMING	RH AIMING(FOR LHD CAR)
HEADLAMP LEVELING	MANUAL
LIGHT CONTROL SYSTEM	ALC FMH 3POSITION
DAYTIME RUNNING LIGHT SYSTEM	WITH (LED)
LICENSE PLATE LAMP	LOWER LIGHTING
SIDE TURN SIGNAL LAMP	OUTER MIRROR
REFLEX REFLECTOR	RR BUMPER
EMERGENCY STOP SIGNAL	WITH
COAT HOOK	WITH
LUGGAGE DR AND BACK DR TRIM	WITH(NEEDLE PUNCH)
FRONT PILLAR GARNISH	BASE
CENTER PILLAR GARNISH	RESIN+RESIN
ROOF SIDE INNER GARNISH	BASE
PACKAGE TRY TRIM&TONNEAU COVER	GLASS FIBER W/O FELT
FLOOR CARPET AND MAT	DILOUR (W/O HEEL PAD)
TRUNK AND DECK CARPET AND MAT	NEEDLE PUNCH
FOOT REST	WITH
COIN POCKET	WITHOUT
DOOR POCKET	WITH(D&P&RR)
LUGGAGE TRAY	WITH
LUGGAGE HOLDING BELT	WITHOUT
INSTRUMENT FINISH PANEL	AUDIO PANEL&METER CLUSTER SATIN(PLATING)
INSTRUMENT PANEL CENTR CLUSTER	SATIN/PIANO BLACK
GLOVE BOX	BIN TYPE W/O LOCK
ASH TRAY	WITHOUT
CIGARETTE LIGHTER	WITHOUT
OVER-HEAD CONSOLE	WITH(W/O SOS SWITCH & HOLDER)
HEATER	STANDARD
AIR CONDITIONER COMPRESSOR	6SES14
CLEAN AIR FILTER	POLLEN TYPE
CONDENSER FAN	WITHOUT
REAR SEAT	6:4 SPLIT FOLDING
CHILD SEAT	WITHOUT
FRONT HEADREST	VERTICAL X2
REAR HEADREST	VERTICAL X2+FIXED X1
FRONT ARM REST	WITHOUT
REAR ARM REST	WITH W/CUP HOLDER
FRONT SEAT SLIDE	260MM D&P:MANUAL
FRONT SEAT RECLINING	D&P:MANUAL
SEAT UNDER TRAY	WITHOUT
FRONT SEAT BELT	D,P:3ELR+PRETENSIONER+FORCE LIMITER X2
REAR SEAT BELT	3ELR X3
ADJUSTABLE SEAT BELT ANCHOR	WITH(FRONT)
SEAT BELT ANCHORAGE	FRONT:3X2, REAR:3X3
CHILD RESTRAINT SYSTEM	ISIZE+TOP TETHERX2
AIR BAG MANUAL ON-OFF SWITCH	P SEAT W/INDICATOR
VOLTAGE	12V
ALTERNATOR	115A OM-LOCAL INTERCONNECT NETWORK W/O CHARGE CONTROL
REGENERATIVE BRAKE	WITHOUT
COMBINATION SWITCH	R:WIPER L:LIGHT W/3T FLS
ACCESSORY CONNECTOR	CONSOLE BOX
TACHOMETER	6200
ECONOMY METER	ECO DRIVING INDICATOR
WATER TEMPERATURE GAUGE	ANALOG
THERMOMETER	AMBIENT
HAZARD WARNING INDICATOR	NORMAL TYPE

SHIFT POSITION INDICATOR	WITH(METER)
METER ILLUMINATION CONTROL	WITH (METER ONLY)
E/G OIL MAINTENANCE INDICATOR	WITHOUT
HEAD UP DISPLAY	WITHOUT
A/T OIL TEMPERATURE WARNING	WITHOUT
BRAKE WARNING	PKB + LEVEL
FUEL LEVEL WARNING	NORMAL
DOOR AJAR WARNING	WITH(SIDE+LUGGAGE)
LIGHT REMIND WARNING	WITH(AUTO CUT)
KEY REMIND WARNING	WITH(BUZZER)
ENGINE OIL LEVEL WARNING	WITHOUT
ENGINE MONITOR WARNING	WITH
HORN	FLAT TYPE 2
INVERTER	WITHOUT
HIGH VOLTAGE BATTERY	WITHOUT
DC/DC CONVERTER	WITHOUT
TRACTION MOTOR	WITHOUT
DISCONNECTION	WITHOUT
MOTOR GENERATOR	WITHOUT
INVERTER RADIATOR	WITHOUT
VEHICLE APPROACH NOTICE	WITHOUT
ANTENNA	REAR GLASS
SATELLITE RADIO	WITHOUT
MAP DISC (DOP)	WITHOUT
TRAFFIC SIGN RECOGNITION	WITHOUT